

# M·S Series Belts for Logistics and General Conveyance / Specialty Applications

## Incline conveyor belts

★ Indicates standard stock. Please contact Bando or your distributor for non-standard belt widths or lengths or for belts without a ★ indication.

Product	No. of plies	Weight (kg/m <sup>2</sup> )	Total thickness (mm)	Minimum pulley diameter (mm)/ Knife edge			Belt support			Top friction coefficient	Backside friction coefficient	Unpackaged food	Non-fray	5 deg incline	Low noise	Maximum applicable width (mm)	Previous product, remarks
				Finger	Hot lap	Cold lap	Table	Roller	Trough								
<b>[13] Excellent durability in inclined conveyance contributes to long belt life</b>																	
SL-MC300★	1	1.9	2.0	20	—	—	○	○	×	0.9	0.1	—	—	○	○	600	4MIGE R80 Mr. Climber
SL-MC400★	2	3.0	3.0	60	60	—	○	○	△	0.9	0.1	—	—	○	○	1800	8MIGE R80 Mr. Climber

## Belts for slide applications

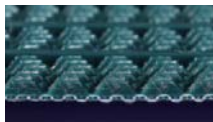
★ Indicates standard stock. Please contact Bando or your distributor for non-standard belt widths or lengths or for belts without a ★ indication.

### [14] Easy-slide surface specification, suitable for side sorting and alignment applications

SL-M5100	1	0.5	0.5	25/R3	30/R5	35	○	○	×	0.15	0.15	○	—	—	—	600	4PE SS
SL-M5200N★	2	1.1	1.1	25/R8	30/R10	40	○	○	△	0.15	0.1	○	—	—	○	1800	8PE SO
SL-M5201N	2	1.0	1.0	25/R5	30/R10	—	○	○	△	0.15	0.15	○	○	—	—	1800	5PE SS
SL-M5302	1	0.5	0.5	25/R3	30/R5	35	○	○	×	0.15	0.15	○	—	—	—	600	4PGE SS
SL-M5402N★	2	1.1	1.1	25/R8	30/R10	40	○	○	△	0.15	0.1	○	—	—	○	1800	8PGE SO
SL-M5422	2	1.2	1.2	25/R5	30/R10	35	○	○	△	0.15	0.15	○	—	—	—	1800	5PGE SS
SL-M8418★	2	1.8	1.6	50	50	55	○	○	△	0.2	0.1	○	—	—	○	1800	8MGUG5E FO
SL-S6235N	2	1.4	1.4	25	30	—	○	○	△	0.15	0.15	○	○	—	—	1800	8PE NF SS
SL-S6933N★	2	1.5	1.4	30/R10	35	—	○	○	△	0.2	0.15	○	○	—	—	1800	5GUGRE FS
SL-SY040★	1	1.0	0.9	25/R5	30	35	○	○	×	0.2	0.15	○	—	—	—	600	4DGUGRE FS

○: Suitable (functional) △: May be suitable. Please contact Bando or your distributor. ×: Not suitable —: Not functional

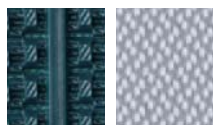
#### ■ SL-MC300 ★



Top/Backside

Material Special rubber/PET  
Color Green/White  
Profile Special (R)/Fabric surface

#### ■ SL-MC400 ★



Top/Backside

Material Special rubber/PET  
Color Green/White  
Profile Special (R)/Fabric surface

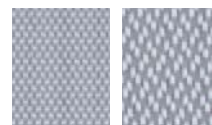
#### ■ SL-M5100



Top/Backside

Material PET/PET  
Color White/White  
Profile Impregnated/Impregnated

#### ■ SL-M5200N ★



Top/Backside

Material PET/PET  
Color White/White  
Profile Impregnated/Fabric surface

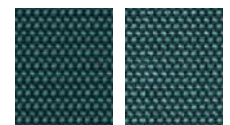
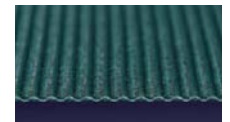
#### ■ SL-M5201N



Top/Backside

Material PET/PET  
Color White/White  
Profile Impregnated/Impregnated

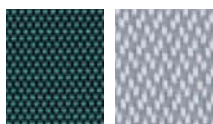
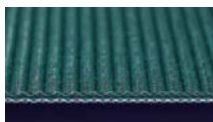
#### ■ SL-M5302



Top/Backside

Material PET/PET  
Color Green/Green  
Profile Impregnated/Impregnated

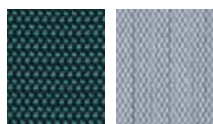
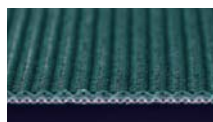
#### ■ SL-M5402N ★



Top/Backside

Material PET/PET  
Color Green/White  
Profile Impregnated/Fabric surface

#### ■ SL-M5422



Top/Backside

Material PET/PET  
Color Green/White  
Profile Impregnated/Impregnated

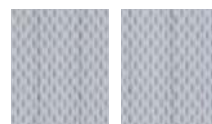
#### ■ SL-M8418 ★



Top/Backside

Material PU/PET  
Color Green/White  
Profile Smooth and matte/Fabric surface

#### ■ SL-S6235N



Top/Backside

Material PET/PET  
Color White/White  
Profile Impregnated/Impregnated

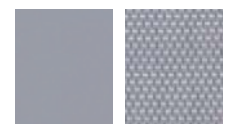
#### ■ SL-S6933N ★



Top/Backside

Material PU/PET  
Color Gray/White  
Profile Smooth and matte/Impregnated

#### ■ SL-SY040 ★



Top/Backside

Material PU/PET  
Color Gray/White  
Profile Smooth and matte/Impregnated


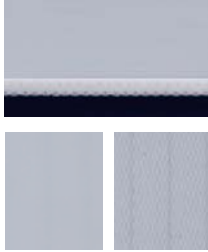

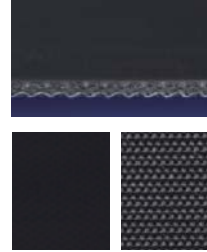
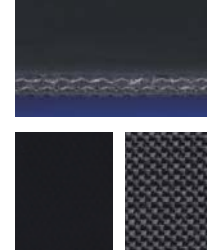
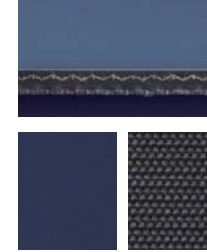

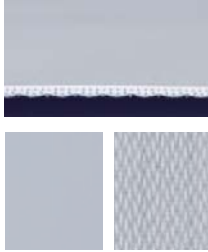

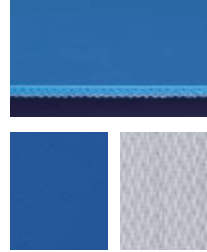

PU: Polyurethane PET: Polyester

## Specialty Belts

★ Indicates standard stock. Please contact Bando or your distributor for non-standard belt widths or lengths or for belts without a ★ indication.

Product	No. of plies	Weight (kg/m <sup>2</sup> )	Total thickness (mm)	Minimum pulley diameter (mm)/ Knife edge			Belt support			Top friction coefficient	Backside friction coefficient	Unpackaged food	Non-fray	5 deg incline	Continuous use with dry heat (°C)	Maximum applicable width (mm)	Previous product, remarks
				Finger	Hot lap	Cold lap	Table	Roller	Trough								
<b>[15] Belts with excellent heat resistance, suitable for conveyance of kneaded rubber, metal, plastics</b>																	
SL-S1235	2	6.0	9.0	—	100	—	○	○	△	0.4	0.15	—	—	○	-10~250	1200	8AUCF8E 0S
SL-S1239	2	1.8	1.6	—	75	—	○	○	△	1.7	0.25	○	—	○	-40~180	1200	5SWE KS
SL-S1831	2	2.2	2.0	—	50	—	○	○	△	0.15	0.15	—	—	—	-20~150	1200	8EE SS
SL-S1832	2	1.8	1.7	—	50	—	○	○	△	0.5	0.15	—	—	○	-20~150	1200	8EBKE FS
SL-S1833	2	2.2	2.1	—	50	—	×	○	△	0.5	0.5	—	—	○	-20~150	1200	8EBK4/ BK4E FN
SL-S1933	2	2.6	2.4	—	100	—	○	○	△	0.1	0.15	○	—	—	-20~150	1200	8FGRE TS
<b>[16] Belts for low temperature conveyance, suitable for frozen food, ice cream and other cold products</b>																	
SL-F1201★	2	1.3	1.1	10/R2	15/R3	25	○	○	△	0.3	0.15	○	○	—	-40~80	1800	
SL-F1218★	2	1.3	1.1	15/R3	20/R5	25	○	○	△	0.3	0.15	○	○	—	-40~80	1800	
SL-F1502	1	0.9	0.8	15/R3	20/R5	25	○	○	×	0.25	0.15	○	○	—	-40~80	600	Mr. Cook the blue
SL-F1601N	2	1.3	1.1	15/R3	20/R5	25	○	○	△	0.3	0.15	○	○	—	-40~80	1800	Mr. Cook the blue
SL-F1611	2	1.5	1.3	25/R8	30/R10	40	×	○	△	0.3	0.3	○	○	—	-40~80	1800	Mr. Cook the blue

○: Suitable (functional) △: May be suitable. Please contact Bando or your distributor. ×: Not suitable —: Not functional

<p>■ SL-S1235</p>  <p>Top/Backside</p> <p>Material Felt/PET</p> <p>Color White/White</p> <p>Profile Felt/Impregnated</p>	<p>■ SL-S1239</p>  <p>Top/Backside</p> <p>Material Silicon/PET</p> <p>Color White/White</p> <p>Profile Mirror type/Impregnated</p>	<p>■ SL-S1831</p>  <p>Top/Backside</p> <p>Material PET/PET</p> <p>Color Black/Black</p> <p>Profile Impregnated/Impregnated</p>	<p>■ SL-S1832</p>  <p>Top/Backside</p> <p>Material Heat resistant rubber/PET</p> <p>Color Black/Black</p> <p>Profile Smooth and matte/Impregnated</p>	<p>■ SL-S1833</p>  <p>Top/Backside</p> <p>Material Heat resistant rubber/Heat resistant rubber</p> <p>Color Black/Black</p> <p>Profile Smooth and matte/Grainy(N)</p>	<p>■ SL-S1933</p>  <p>Top/Backside</p> <p>Material Fluorine resin/PET</p> <p>Color Gray/Black</p> <p>Profile Film/Impregnated</p>
<p>■ SL-F1201★</p>  <p>Top/Backside</p> <p>Material PU/PET</p> <p>Color White/White</p> <p>Profile Smooth and glossy/Impregnated</p>	<p>■ SL-F1218★</p>  <p>Top/Backside</p> <p>Material PU/PET</p> <p>Color White/White</p> <p>Profile Smooth and glossy/Impregnated</p>	<p>■ SL-F1502</p>  <p>Top/Backside</p> <p>Material PU/PET</p> <p>Color Blue/White</p> <p>Profile Smooth and matte/Impregnated</p>	<p>■ SL-F1601N</p>  <p>Top/Backside</p> <p>Material PU/PET</p> <p>Color Blue/White</p> <p>Profile Smooth and glossy/Impregnated</p>	<p>■ SL-F1611</p>  <p>Top/Backside</p> <p>Material PU/PET</p> <p>Color Blue/Blue</p> <p>Profile Smooth and glossy/Grainy(N)</p>	

PU: Polyurethane PET: Polyester

# S Series Belts for Specialty Applications

## Specialty Belts

★ Indicates standard stock. Please contact Bando or your distributor for non-standard belt widths or lengths or for belts without a ★ indication.

Product	No. of plies	Weight (kg/m <sup>2</sup> )	Total thickness (mm)	Minimum pulley diameter (mm)/ Knife edge			Belt support			Top friction coefficient	Backside friction coefficient	Unpackaged food	Non-fray	5 deg incline	Ultra anti-static	Maximum applicable width (mm)	Previous product, remarks
				Finger	Hot lap	Cold lap	Table	Roller	Trough								
<b>[17] Excellent oil resistance, such as to machine oil</b>																	
SL-S2632	2	3.6	3.3	75	75	—	○	○	△	0.5	0.15	—	—	○	—	1800	8RDB20E HS
SL-S2634	2	2.1	1.9	50	50	—	○	○	△	0.5	0.15	—	—	○	—	1800	8RDB5E HS
SL-SY533	1	1.9	1.7	30	30	—	×	○	×	0.5	0.5	—	—	○	—	600	4RDB5/5E N3N
SL-SY534	1	1.1	1.0	25	25	—	○	○	×	0.4	0.15	—	—	○	—	600	4RDB5E HS
<b>[18] Belts for heavy object conveyance, such as iron plates and lumber, with excellent resistance to impact and piercing</b>																	
SL-S5425 ★	2	2.1	1.9	60	60	70	○	○	△	0.3	0.15	○	—	—	—	1800	16AUGE HS
SL-SY035	3	2.9	2.8	100	100	125	○	○	×	0.3	0.15	○	—	—	—	1800	12UG5E HS
<b>[19] Belts suitable for conveyance of items easily affected by static electricity, such as paper, fiber or electrical components</b>																	
SL-S3726	1	1.0	0.9	25/R8	30/R10	35	○	○	×	0.3	0.15	○	○	—	○	600	
SL-S3827	2	1.5	1.4	35	40	45	○	○	△	0.25	0.15	○	—	—	○	2500	8HUBKE FS

○: Suitable (functional) △: May be suitable. Please contact Bando or your distributor. ×: Not suitable —: Not functional

■ SL-S2632



Top/Backside

Material PVC/PET

Color Dark blue/White

Profile Smooth and glossy/Impregnated

■ SL-S2634



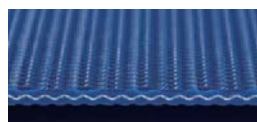
Top/Backside

Material PVC/PET

Color Dark blue/White

Profile Smooth and glossy/Impregnated

■ SL-SY533



Top/Backside

Material PVC/PVC

Color Dark blue/Dark blue

Profile Grainy(N3)/Grainy(N)

■ SL-SY534



Top/Backside

Material PVC/PET

Color Dark blue/White

Profile Smooth and glossy/Impregnated

■ SL-S5425 ★



Top/Backside

Material PU/PET

Color Green/White

Profile Smooth and glossy/Impregnated

■ SL-SY035



Top/Backside

Material PU/PET

Color Green/White

Profile Smooth and glossy/Impregnated

■ SL-S3726



Top/Backside

Material PU/PET

Color Black/White

Profile Smooth and glossy/Impregnated

■ SL-S3827



Top/Backside

Material PU/PET

Color Black/White

Profile Smooth and matte/Impregnated

PU: Polyurethane PET: Polyester PVC: Polyvinyl chloride

Product	No. of plies	Weight (kg/m <sup>2</sup> )	Total thickness (mm)	Minimum pulley diameter (mm)/ Knife edge			Belt support			Top friction coefficient	Backside friction coefficient	Unpackaged food	Non-fray	Antibacterial Antifungal	5 deg incline	Maximum applicable width (mm)	Previous product, remarks
				Finger	Hot lap	Cold lap	Table	Roller	Trough								
<b>[20] Flexible in width direction, suitable for trough or curved conveyors</b>																	
SL-S7100	1	0.9	0.8	25/R5	30	35	○	○	○	0.25	0.15	○	○	○	—	600	※1
SL-S7200	2	1.5	1.4	35	40	45	○	○	○	0.25	0.15	○	○	○	—	1800	※1
SL-S7300	1	0.9	0.8	25/R5	30	35	○	○	○	0.25	0.15	○	—	—	—	600	
SL-S7400	2	1.5	1.4	35	40	45	○	○	○	0.25	0.15	○	—	—	—	1800	
<b>[21] Low noise belts, suitable for use at airports and logistics centers</b>																	
SL-M0409★	2	2.2	2.1	50	50	55	○	○	△	1.7	0.1	○	—	—	○	1800	8MUGE R10
SL-M4100	1	0.9	0.8	15/R3	25/R8	30	○	○	×	0.3	0.1	○	—	—	—	600	4MUWE H0
SL-M6423	2	1.5	1.4	35	40	40	○	○	△	0.3	0.1	○	—	—	—	1800	8MUGE H0
SL-M9409N	2	3.5	3.2	50	—	50	○	○	△	0.7	0.1	—	—	—	○	3000	8MCGE R10
SL-SY455N	2	2.2	2.0	50	50	50	○	○	△	0.4	0.1	—	—	—	○	3000	8MCGE H0

○: Suitable (functional) △: May be suitable. Please contact Bando or your distributor. ×: Not suitable —: Not functional

※1 Not suitable for curved conveyors as cleat process adhesion is low

### SL-S7100



Top/Backside

Material PU/PET

Color White/White

Profile Smooth and matte/Impregnated

### SL-S7200



Top/Backside

Material PU/PET

Color White/White

Profile Smooth and matte/Impregnated

### SL-S7300



Top/Backside

Material PU/PET

Color Green/White

Profile Smooth and matte/Impregnated

### SL-S7400



Top/Backside

Material PU/PET

Color Green/White

Profile Smooth and matte/Impregnated

### SL-M0409★



Top/Backside

Material PU/PET

Color Green/White

Profile Grooved(R1)/Fabric surface

### SL-M4100



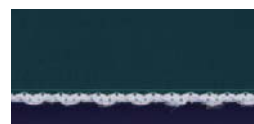
Top/Backside

Material PU/PET

Color White/White

Profile Smooth and glossy/Fabric surface

### SL-M6423



Top/Backside

Material PU/PET

Color Green/White

Profile Smooth and glossy/Fabric surface

### SL-M9409N



Top/Backside

Material PVC/PET

Color Green/White

Profile Grooved(R1)/Fabric surface

### SL-SY455N



Top/Backside

Material PVC/PET

Color Green/White

Profile Smooth and glossy/Fabric surface

PU: Polyurethane PET: Polyester PVC: Polyvinyl chloride


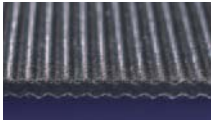









# S Series Belts for Specialty Applications

## Specialty Belts

★ Indicates standard stock. Please contact Bando or your distributor for non-standard belt widths or lengths or for belts without a ★ indication.

Product	No. of plies	Weight (kg/m <sup>2</sup> )	Total thickness (mm)	Minimum pulley diameter (mm)/ Knife edge			Belt support			Top friction coefficient	Backside friction coefficient	Unpackaged food	Non-fray	5 deg incline	Continuous use with dry heat (°C)	Maximum applicable width (mm)	Previous product, remarks
				Finger	Hot lap	Cold lap	Table	Roller	Trough								
<b>[22] Belts with non-sticky covers impregnated with heat resistant rubber, or made using silicon or felt.</b>																	
SL-S1239	2	1.8	1.6	—	75	—	○	○	△	1.7	0.25	○	—	○	-40~180	1200	5SWE KS
SL-S1831	2	2.2	2.0	—	50	—	○	○	△	0.15	0.15	—	—	—	-20~150	1200	8EE SS
SL-S8231N	2	2.4	2.4	50	50	55	○	○	△	0.25	0.15	○	—	—	-10~80	1800	4PCE OO
SL-SY137N	1	2.2	2.7	—	40	40	○	○	×	0.4	0.15	○	—	—	-10~80	600	4DUMFE OS
<b>[23] Belts resistant to mold propagation, meeting food sanitation needs</b>																	
SL-S9200	2	2.3	2.1	60	60	60	○	○	△	0.5	0.15	○	○	○	5~60	1800	
SL-S9235	2	2.6	2.4	80	80	80	×	○	△	0.4	0.4	○	○	○	5~60	1800	8CW5/W5JE FF
SL-SY292★	2	3.2	2.9	100	100	100	×	○	○	0.4	0.5	○	○	○	5~60	1800	8YCW FN
<b>[24] Belts suitable for metal detectors, and visual or electronic scan detection devices</b>																	
SL-SY045	2	1.4	1.3	35	40	—	○	○	△	0.25	0.25	○	○	—	-10~80	1200	5UTOMEI FF
SL-M4100	1	0.9	0.8	15/R3	25/R8	30	○	○	×	0.3	0.1	○	—	—	-10~80	600	4MUWE HO
SL-M4300	1	0.9	0.8	15/R3	25/R8	30	○	○	×	0.3	0.1	○	—	—	-10~80	600	4MUGE HO
<b>[25] Belts suitable for cutting of conveyed items on the belt surface</b>																	
SL-SY245	2	4.4	4.0	—	150	150	○	○	△	1.7	0.3	○	○	○	-10~80	1800	8USW15/W12E FN

○: Suitable (functional) △: May be suitable. Please contact Bando or your distributor. ×: Not suitable —: Not functional

<p>■ SL-S1239</p>  <p>Top/Backside</p> <p>Material Silicon/PET</p> <p>Color White/White</p> <p>Profile Mirror type/Impregnated</p>	<p>■ SL-S1831</p>  <p>Top/Backside</p> <p>Material PET/PET</p> <p>Color Black/Black</p> <p>Profile Impregnated/Impregnated</p>	<p>■ SL-S8231N</p>  <p>Top/Backside</p> <p>Material Cotton/PET</p> <p>Color White/White</p> <p>Profile Cotton fabric/Impregnated</p>	<p>■ SL-SY137N</p>  <p>Top/Backside</p> <p>Material Felt/PET</p> <p>Color White/White</p> <p>Profile Felt/Impregnated</p>	<p>■ SL-S9200</p>  <p>Top/Backside</p> <p>Material PVC/PET</p> <p>Color White/White</p> <p>Profile Smooth and glossy/Impregnated</p>	<p>■ SL-S9235</p>  <p>Top/Backside</p> <p>Material PVC/PVC</p> <p>Color White/White</p> <p>Profile Smooth and matte/Smooth and matte</p>
<p>■ SL-SY292★</p>  <p>Top/Backside</p> <p>Material PVC/PVC</p> <p>Color White/White</p> <p>Profile Smooth and matte/Grainy(N)</p>	<p>■ SL-SY045</p>  <p>Top/Backside</p> <p>Material PU/PU</p> <p>Color Transparent/Transparent</p> <p>Profile Smooth and matte/Smooth and matte</p>	<p>■ SL-M4100</p>  <p>Top/Backside</p> <p>Material PU/PET</p> <p>Color White/White</p> <p>Profile Smooth and glossy/Fabric surface</p>	<p>■ SL-M4300</p>  <p>Top/Backside</p> <p>Material PU/PET</p> <p>Color Green/White</p> <p>Profile Smooth and glossy/Fabric surface</p>	<p>■ SL-SY245</p>  <p>Top/Backside</p> <p>Material PU/PU</p> <p>Color White/White</p> <p>Profile Smooth and matte/Grainy(N)</p>	

PU: Polyurethane PET: Polyester PVC: Polyvinyl chloride